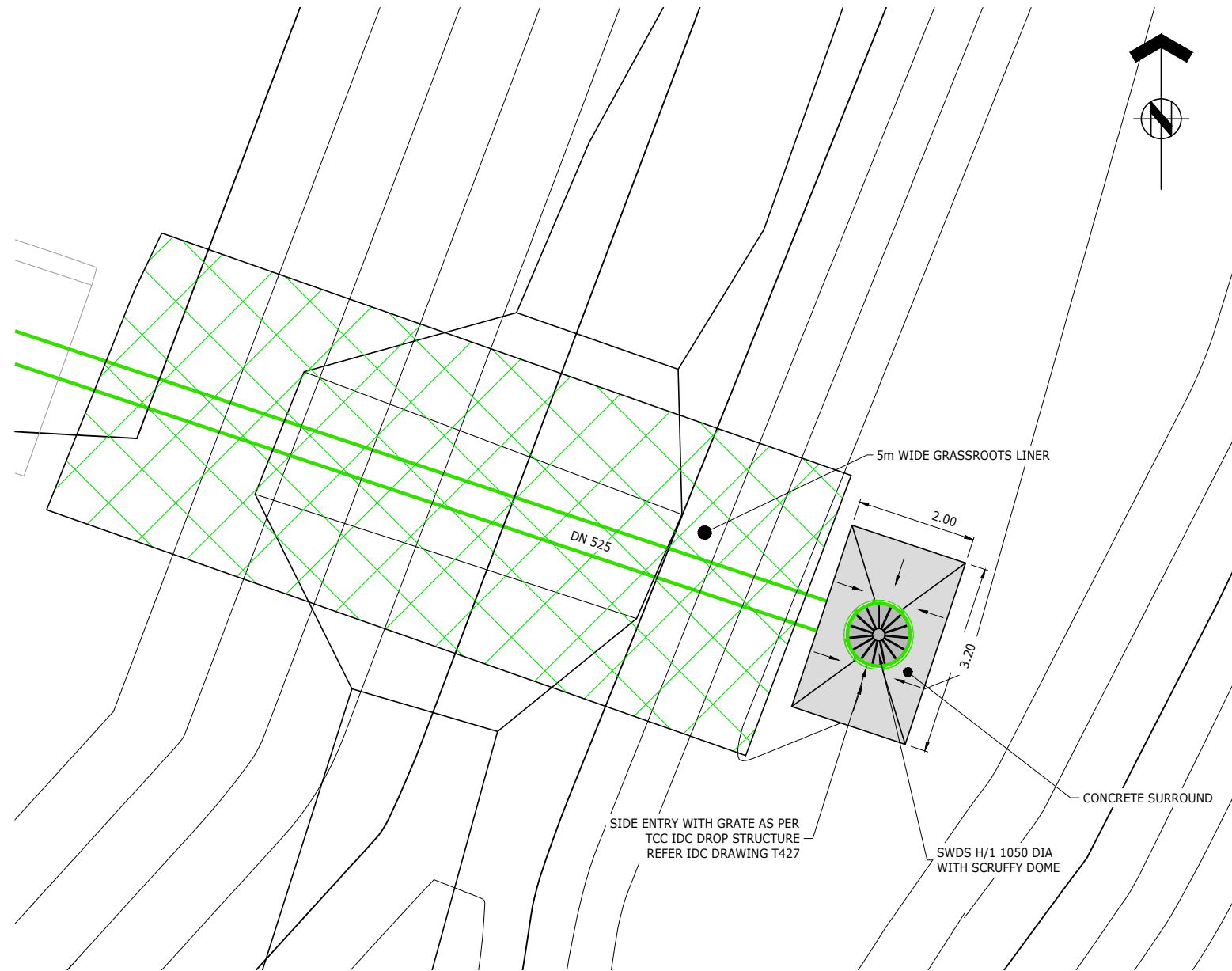
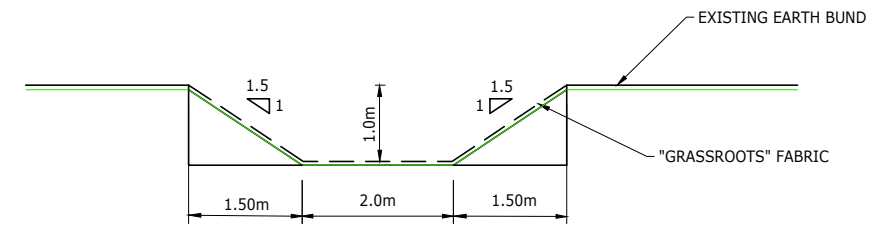
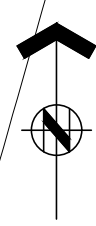


NOTES:

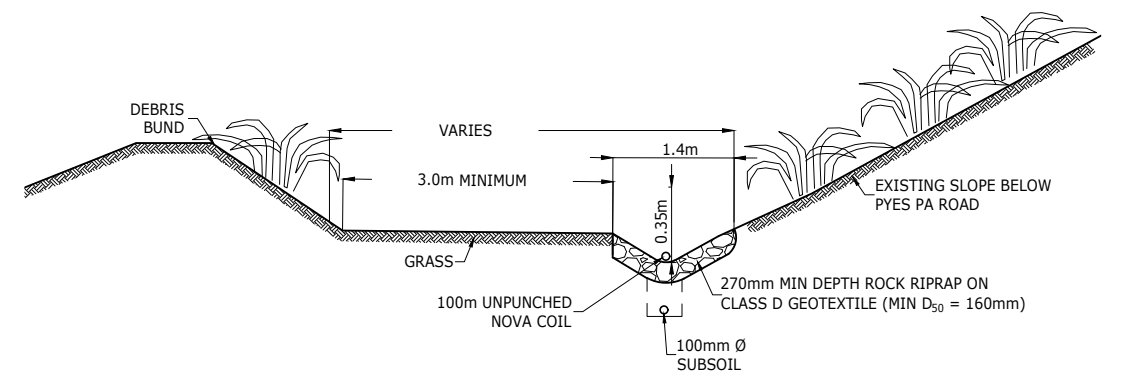
1. LEVELS ARE IN TERMS OF THE MOTURIKI DATUM.
2. COORDINATES ARE IN TERMS OF BAY OF PLENTY 2000 CIRCUIT.
3. ORIGIN OF LEVELS TCC BENCHMARK BM 1343 RL 57.59m.
4. METHOD OF SURVEY: GPS
5. ALL WORKS WERE CARRIED OUT TO TCC IDC 2011 STANDARDS.
6. ALL STORMWATER PIPES ARE RCRRJ PIPES UNLESS OTHERWISE STATED.
7. ALL CONCRETE PIPES ARE CLASS 2 UNLESS OTHERWISE STATED.
8. SWALES FORMED WITH 'GRASSROOTS' MATTING



A STORMWATER DROP STRUCTURE H/1
SCALE 1:50 - A1, 1:100 - A3



1 EARTH BUND EMERGENCY SPILLWAY
SCALE 1:50 - A1, 1:100 - A3



2 STAGE 3I DEBRIS BUND CROSS SECTION
SCALE 1:50 - A1, 1:100 - A3

ORIGINATOR: TCH		DATE: 22.12.17	SIGNED:	TRIS	ISO 9001 QUALITY ASSURED	<p>TAURANGA OFFICE LEVEL 1 HARRISON GRIERSON HOUSE 60 SPRING STREET TAURANGA 3110 T +64 7 578 0023 W www.harrisongrierson.com</p>	<p>Summit THE LAKES (2012) LIMITED, TAURANGA</p>	<p>TITLE: STAGE 3I AS BUILT STORMWATER DETAILS TCC IP 101782</p>	ISSUE STATUS: FINAL AS BUILT	
DRAWN: TCH		DATE: 22.12.17	SIGNED:	18.01.18	THIS DRAWING AND DESIGN REMAINS THE PROPERTY OF, AND MAY NOT BE REPRODUCED OR ALTERED, WITHOUT THE WRITTEN PERMISSION OF HARRISON GRIERSON CONSULTANTS LIMITED. NO LIABILITY SHALL BE ACCEPTED FOR UNAUTHORISED USE OF THIS DRAWING.				PROJECT No: 1520-139618-01	SCALES: AS SHOWN
CHECKED: GPR		DATE: 18.01.18	SIGNED:			DRAWING No: 139618-AB111		REV		
APPROVED: TCH		DATE: 22.12.17	SIGNED:					B		
BY DATE		GPR	DATE: 18.01.18	SIGNED:						
REF REVISIONS										